

# Pos eidon

the chance to  
create a lifestyle  
that's all about you...

quite a refreshing  
thought really.

# Pos eidon

the chance to  
create a lifestyle  
that's all about you...

quite a refreshing  
thought really.

Contact the MHO sales team on:

020 3535 2555

[mhosales@mht.co.uk](mailto:mhosales@mht.co.uk) [www.mho.co.uk](http://www.mho.co.uk)



Part of



Improving **life** together



12 STYLISH APARTMENTS AVAILABLE THROUGH SHARED OWNERSHIP

These brief particulars have been prepared and are intended as a convenient guide to supplement an inspection or survey and do not form, or form part of, any offer or contract. Their accuracy is not guaranteed. They contain statements of opinion and in some instances we have relied on information supplied by others. Design elements and specification details may change without further notice. You should verify the particulars on your visit to the property and the particulars do not obviate the need for a full structural survey and all the appropriate enquiries. Accordingly, there shall be no liability as a result of any error or omission in the particulars or any information given.

# Poseidon

Metropolitan Home Ownership is offering 12 light and spacious apartments for sale on a Shared Ownership basis at this flagship development, built by Galliard Homes, in the heart of Harrow.

With four one-bedroom and eight two-bedroom apartments designed to suit the lifestyle needs of professional singles, couples and fledgling families, you'll find it difficult to make a choice. Each apartment has its own private balcony - and some have views over Poseidon's landscaped courtyard.

If you're eligible for Shared Ownership, you'll be able to buy a share in one of the apartments with a mortgage and pay rent on the remaining share, owned by MHO.\*

Priority will be given to those who live and work in the London Borough of Harrow. Shared Ownership means you'll pay a lower deposit and monthly housing costs approximately 20% less than if you were buying the same property outright on the open market or renting it privately.

\*Speak to Metropolitan Home Ownership for full details and eligibility.

*A stylish collection of brand new apartments perfectly placed for all that Harrow has to offer.*



Harrow College - image courtesy of Henry Lawford

## Local Area

*A home at Poseidon puts you at the heart of Harrow within minutes' of shopping, entertainment and fitness facilities!*

With a Morrison's supermarket on the ground floor of Poseidon and Harrow's High Street just five minutes' walk away, the shops are literally on your doorstep! Whether you're doing the weekly grocery shop or just picking up a pint of milk, you won't have far to go.

Take a trip to St Ann's or St George's Shopping Centre, home to High Street names as H & M, River Island, Debenhams and TK Maxx. Enjoy a film at the nine-screen cinema - 'The Vue' - just a short walk from Poseidon - or head to the nearby Safari cinema for a touch of 'Bollywood glamour.' Several of the local pubs provide live music - or for entertainment on a grander scale, Wembley is just a couple of tube stops away. Work out at Harrow Leisure Centre or the Fitness First gym, stroll in one of the Borough's 50 parks or walk or cycle along the London Loop which passes through Harrow. There's plenty to do, indoors and out, whatever the weather.



*With four one-bedroom and eight two-bedroom apartments designed to suit the lifestyle needs of professional singles, couples and fledgling families, you'll find it difficult to make a choice. Each apartment has its own private balcony - and some have views over Poseidon's landscaped courtyard.*

# Poseidon

## Specifications

With clean lines and contemporary fixtures and fittings, a new apartment at Poseidon will be the envy of your friends! Each kitchen includes an oven, hob and cooker hood as well as an integrated fridge freezer, dishwasher and washing machine. The bathroom features classic white sanitary ware and complementary chrome fittings. Electric heating provides a comfortable ambient temperature and apartments are fitted with ample electrical sockets. TV/BT points are fitted in the living room and master bedroom and lighting is a combination of downlighters and pendant lights.



Interior images of a similar development.



With tube and rail links within a short walk and good local bus routes, it's easy to get around from Poseidon without a car!

## transport

The London Borough of Harrow is extremely well connected with 11 underground stations, three mainline railway stations and a network of bus routes as well as easy access to the M1, M3, M4, M25 and M40.

From Poseidon, it's less than ten minutes' walk to Harrow-on-the-Hill's mainline station and tube station, on the Metropolitan line.

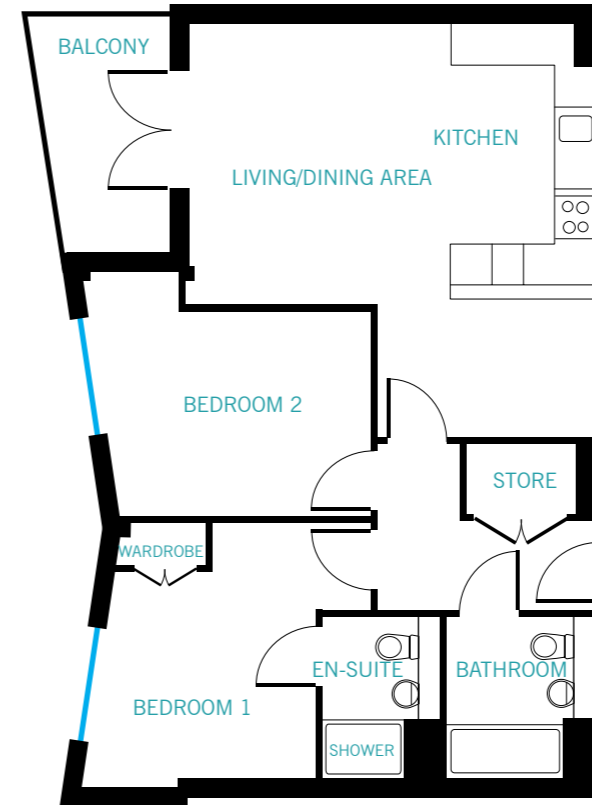
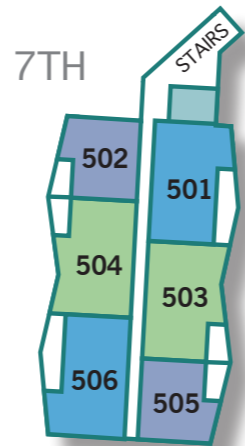
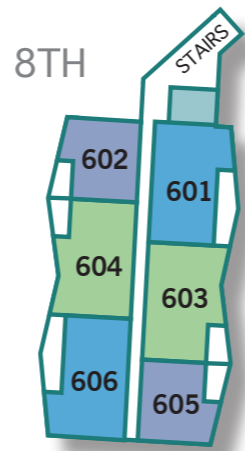
From Harrow on the Hill, you can be at Wembley Park in just 8 minutes, at Baker Street in approximately 20 minutes and at Aldgate in about 38 minutes. By rail, you can be in London's Marylebone station within approximately 15 minutes. Whether you're commuting to work, shopping or meeting friends, getting out and about is easy!

Information taken from Transport For London website and from [www.lifeinharrow.co.uk](http://www.lifeinharrow.co.uk)

## Local Map



# Site map & Floor plans

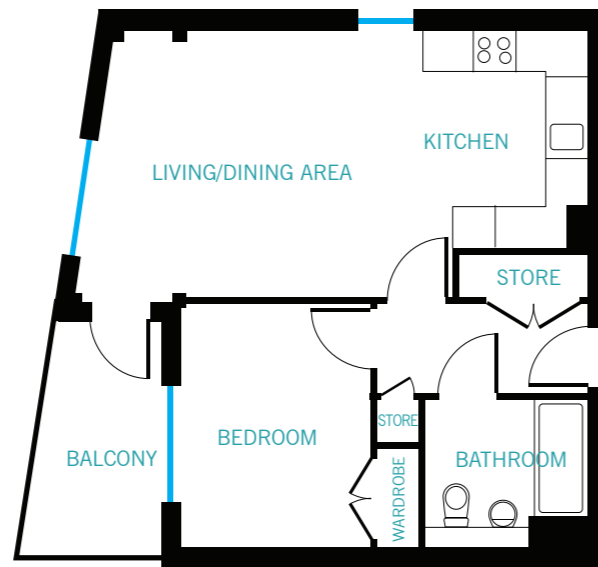


**TYPE THREE**  
 FLAT: 503, 504, 603 & 604  
 Kitchen/Living/Dining Area  
 5.06m x 5.75m / 16' 7" x 18' 10"  
 Bedroom 1  
 3.72m x 3.40m / 12' 2" x 11' 1"  
 Bedroom 2  
 2.94m x 4.23m / 9' 7" x 13' 10"

All measurements are approximate and do not include balconies.

THE APARTMENTS ON THE 3RD TO 6TH FLOORS ARE FOR PRIVATE SALE

**TYPE ONE**  
 FLAT: 502, 505, 602 & 605  
 Kitchen/Living/Dining Area  
 3.77m x 6.87m / 12' 4" x 22' 6"  
 Bedroom  
 3.40m x 3.35m / 11' 1" x 10' 11"



**TYPE TWO**  
 FLAT: 501, 506, 601 & 606  
 Kitchen/Living/Dining Area  
 4.60m x 6.87m / 15' 0" x 22' 6"  
 Bedroom 1  
 3.22m x 3.48m / 10' 6" x 11' 5"  
 Bedroom 2  
 3.15m x 2.25m / 10' 4" x 7' 4"

